

the space

lowerground

Tenant store / gym 1,160 sq ft / 108 sq m



 Bicycle store

 Tenant store / gym

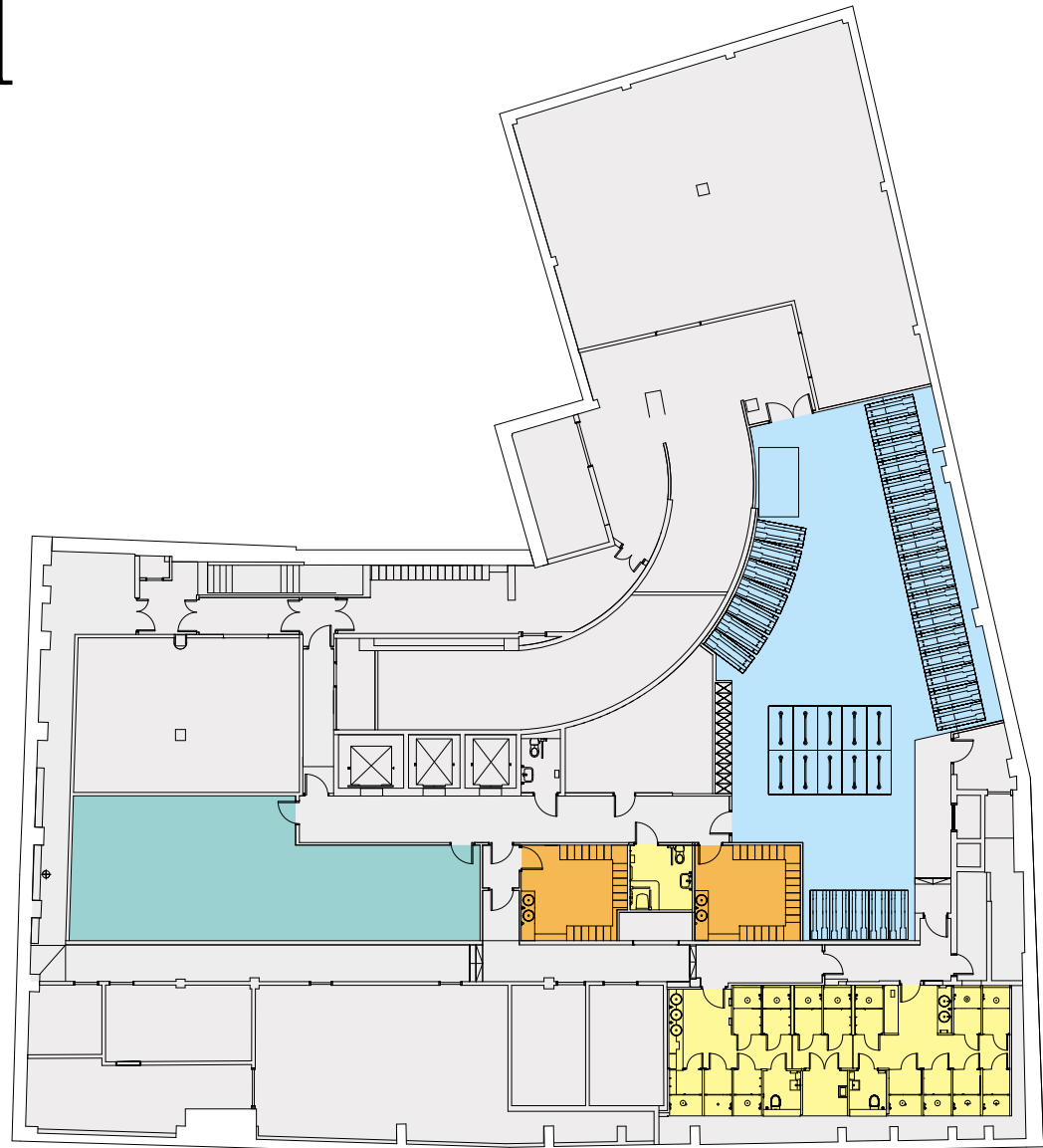
 Changing rooms

 Commuter facilities

 Core

Not to scale.
For indicative purposes only.

Warwick Lane



Newgate Street

the space

ground floor

Office 6,374 sq ft / 592 sq m

Reception 2,636 sq ft / 245 sq m



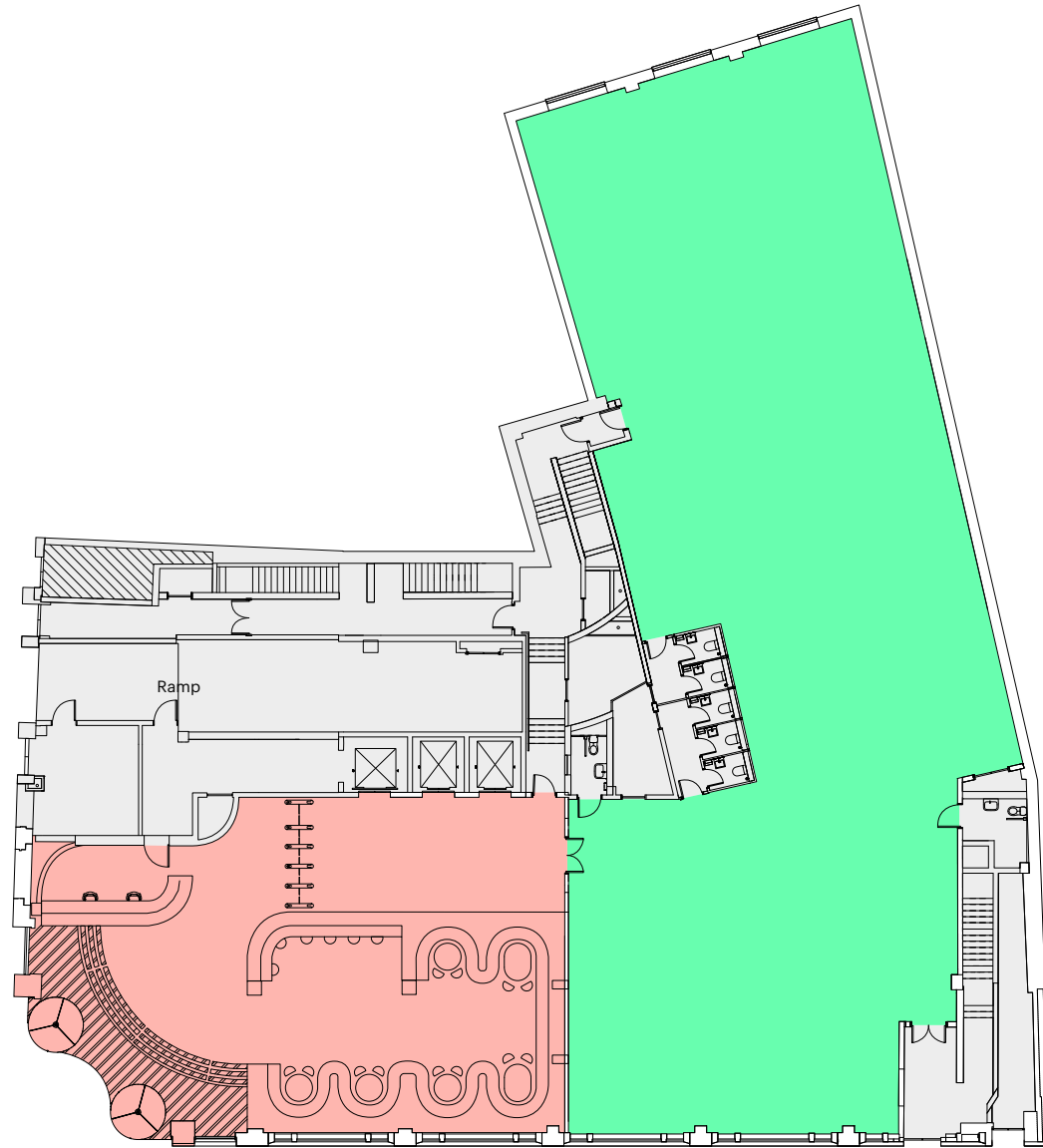
Office

Reception

Core

Not to scale.
For indicative purposes only.

Warwick Lane



Newgate Street

the space

firstfloor

Office 10,616 sq ft / 986 sq m

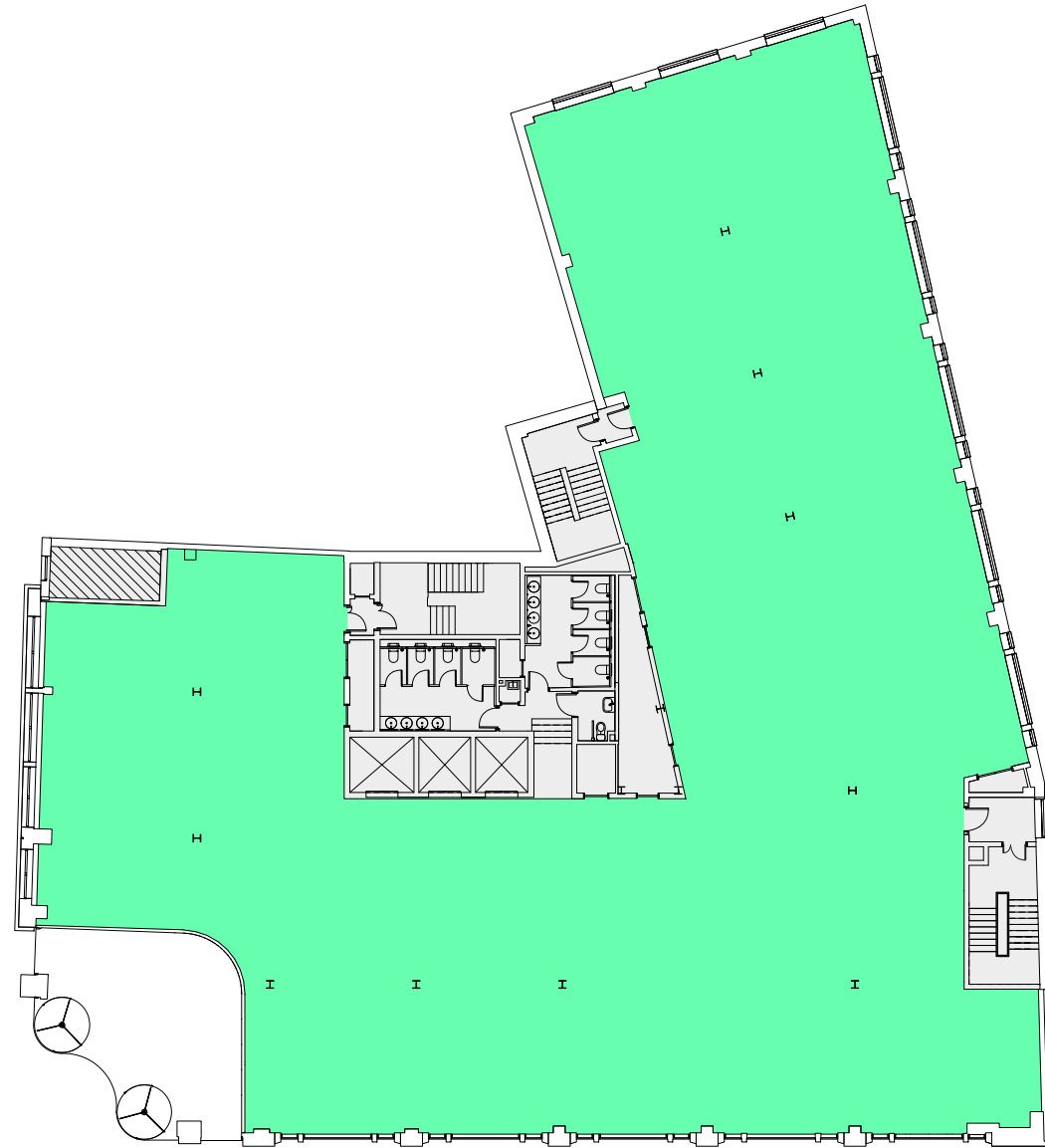


Office

Core

Not to scale.
For indicative purposes only.

Warwick Lane



Newgate Street

the space

second floor

Office 11,653 sq ft / 1,083 sq m

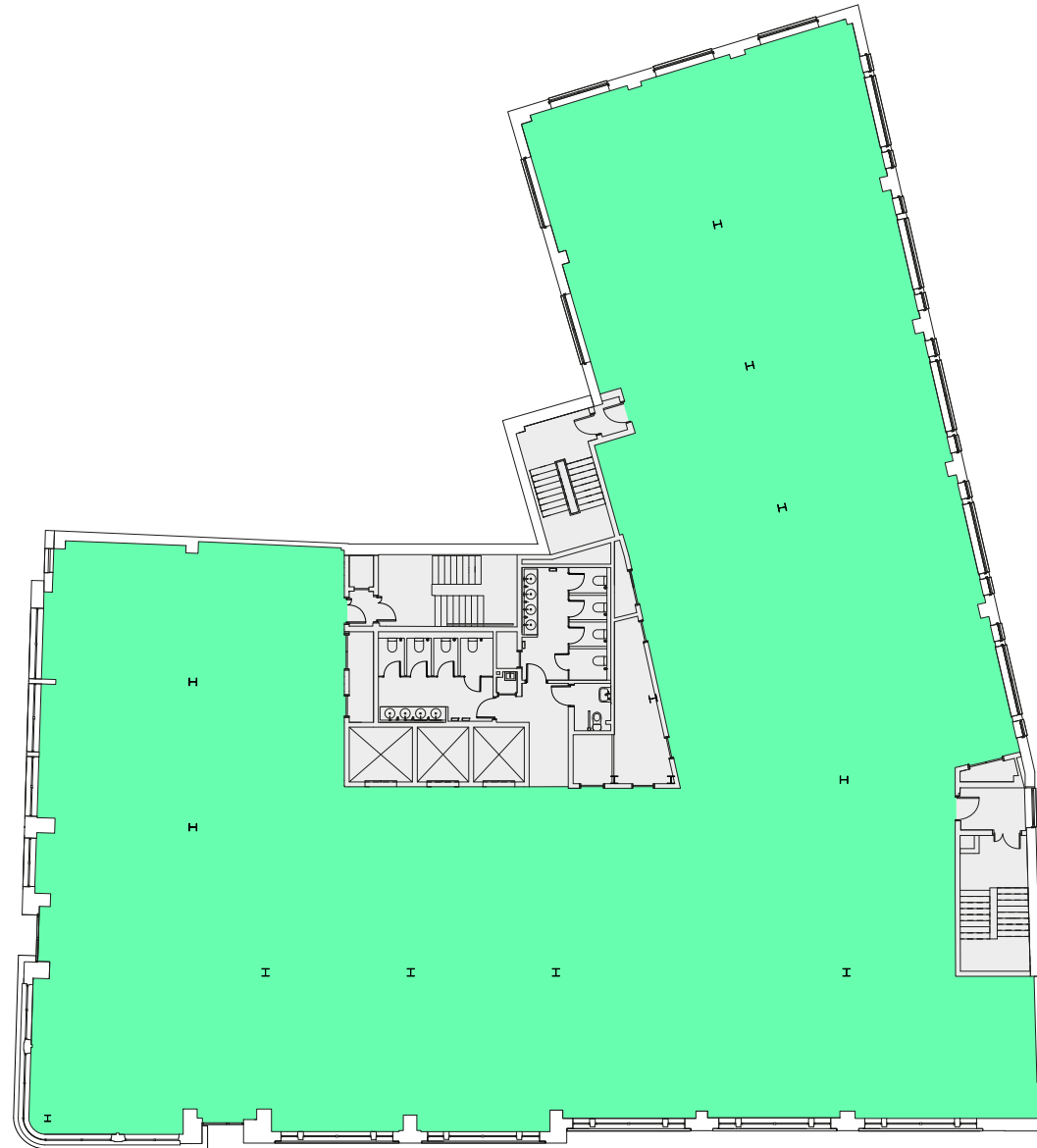


Office

Core

Not to scale.
For indicative purposes only.

Warwick Lane



Newgate Street

the space

third floor

Office 11,673 sq ft / 1,084 sq m

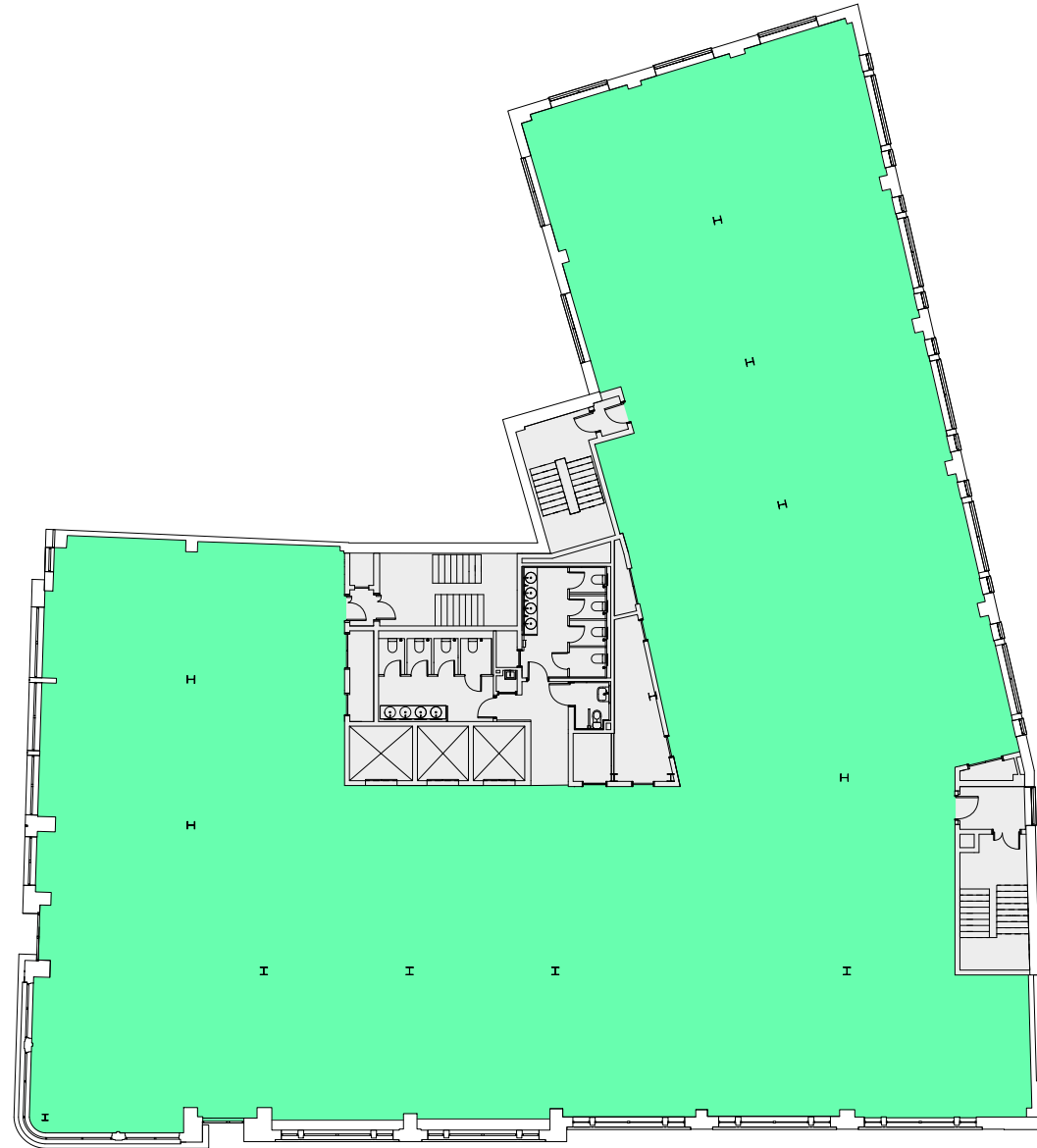


Office

Core

Not to scale.
For indicative purposes only.

Warwick Lane



Newgate Street

the space

fourth floor

Office 11,571 sq ft / 1,075 sq m



Office

Core

Not to scale.
For indicative purposes only.

Warwick Lane



Newgate Street

the space

fifth floor

Office 10,343 sq ft / 961 sq m

Terrace 590 sq ft / 55 sq m



Office

Terrace

Core

Not to scale.
For indicative purposes only.

Warwick Lane



Newgate Street

the space

sixth floor

Office 7,505 sq ft / 697 sq m

Terrace 2,150 sq ft / 200 sq m



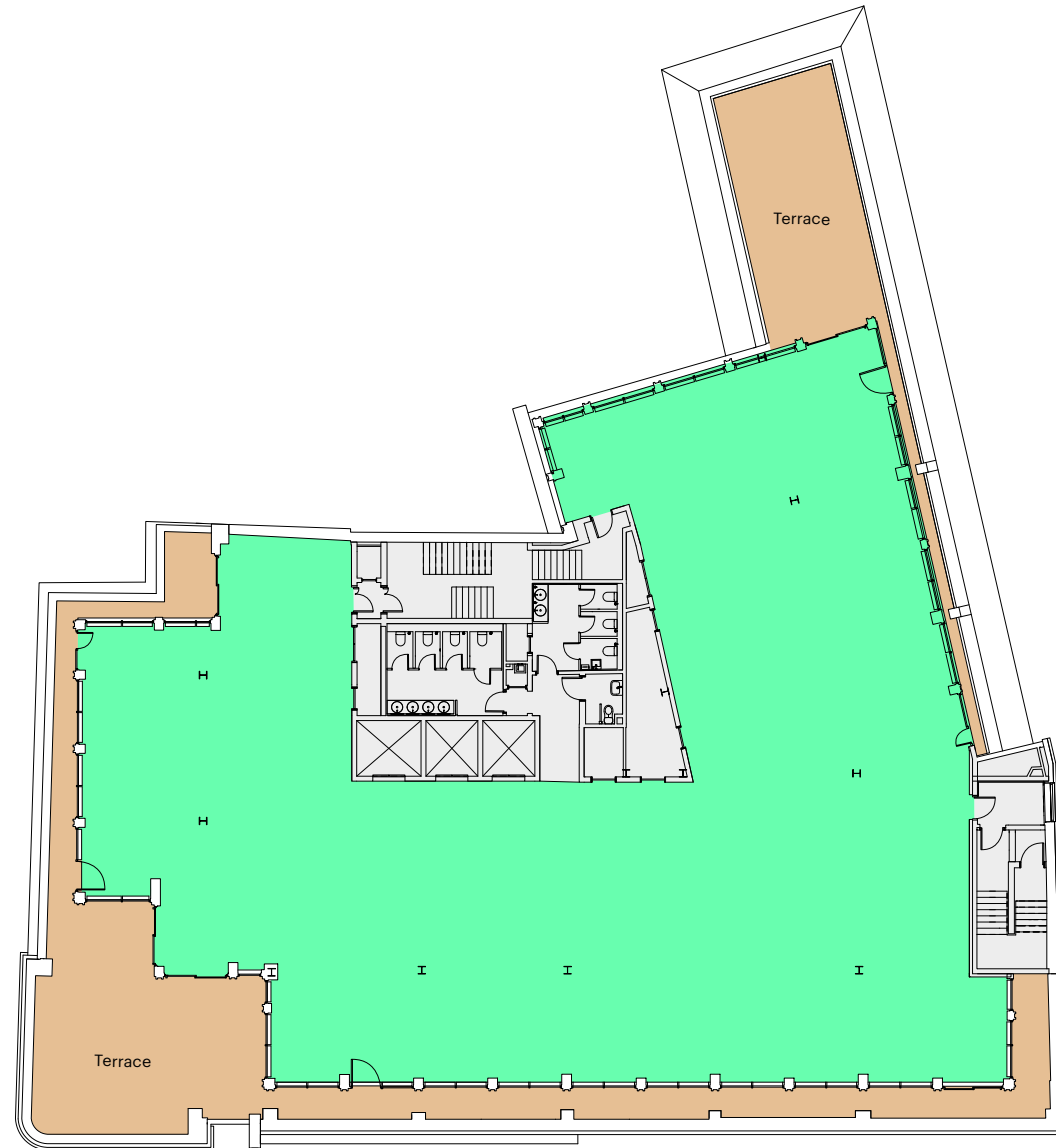
Office

Terrace

Core

Not to scale.
For indicative purposes only.

Warwick Lane



Newgate Street

the space

seventh floor

Office 1,264 sq ft / 117 sq m

Terrace 3,500 sq ft / 325 sq m

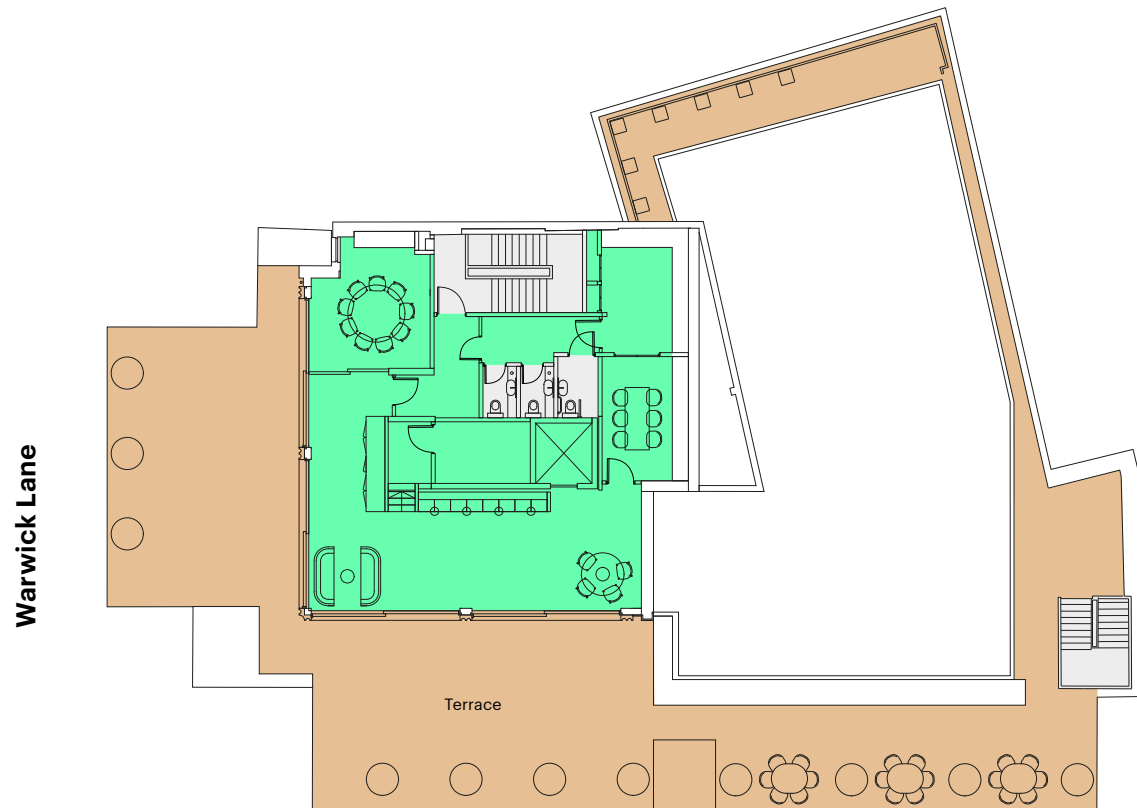


■ Office

■ Terrace

■ Core

Not to scale.
For indicative purposes only.



Warwick Lane

Terrace

Newgate Street

the space

third floor open plan

Office 11,673 sq ft / 1,084 sq m

| Area | No. of seats |
|------------------------------------|------------------|
| Open plan desks / docking stations | 104 |
| Shared offices & focus rooms | 16 |
| Open collaboration & drop in desks | 70 |
| Internal meeting & call rooms | 6 |
| Social areas | 28 |
| Total workspace seats | 224 |
| Tea point | 1 |
| Occupancy ratio | 1:10 sq m |

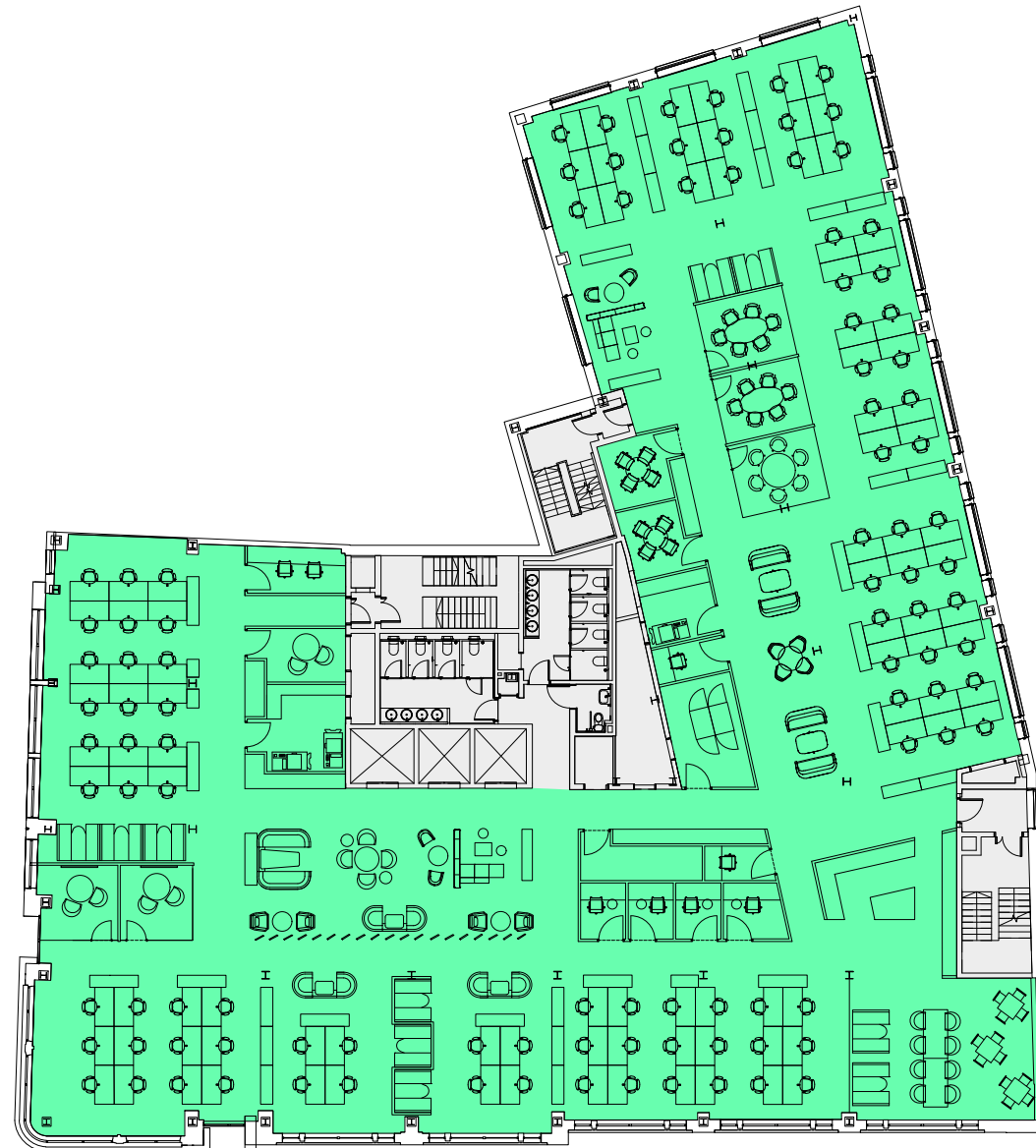


Office

Core

Not to scale.
For indicative purposes only.

Warwick Lane



Newgate Street

the space

third floor cellular

Office 11,673 sq ft / 1,084 sq m

| Area | No. of seats |
|----------------------------------|------------------|
| Open plan desks | 72 |
| 16 Double offices | 32 |
| Open collaboration & shared work | 21 |
| Internal meeting & quiet rooms | 16 |
| Social areas | 12 |
| Total workspace seats | 153 |
| Occupancy ratio | 1:10 sq m |



Office

Core

Not to scale.
For indicative purposes only.

Warwick Lane



Newgate Street

the space

third floor agile

Office 11,673 sq ft / 1,084 sq m

| Area | No. of seats |
|-------------------------------------|------------------|
| Open plan desks / docking stations | 58 |
| Shared offices & focus rooms | 11 |
| Open collaboration & drop in desks | 43 |
| Internal meeting & call rooms | 12 |
| Social areas | 41 |
| Total workspace seats | 165 |
| <hr/> | |
| 2 x 14 person meeting room | 28 |
| 1 x 12 person meeting room | 12 |
| 1 x 10 person informal meeting room | 10 |
| Total client space seats | 50 |
| <hr/> | |
| Occupancy ratio | 1:10 sq m |

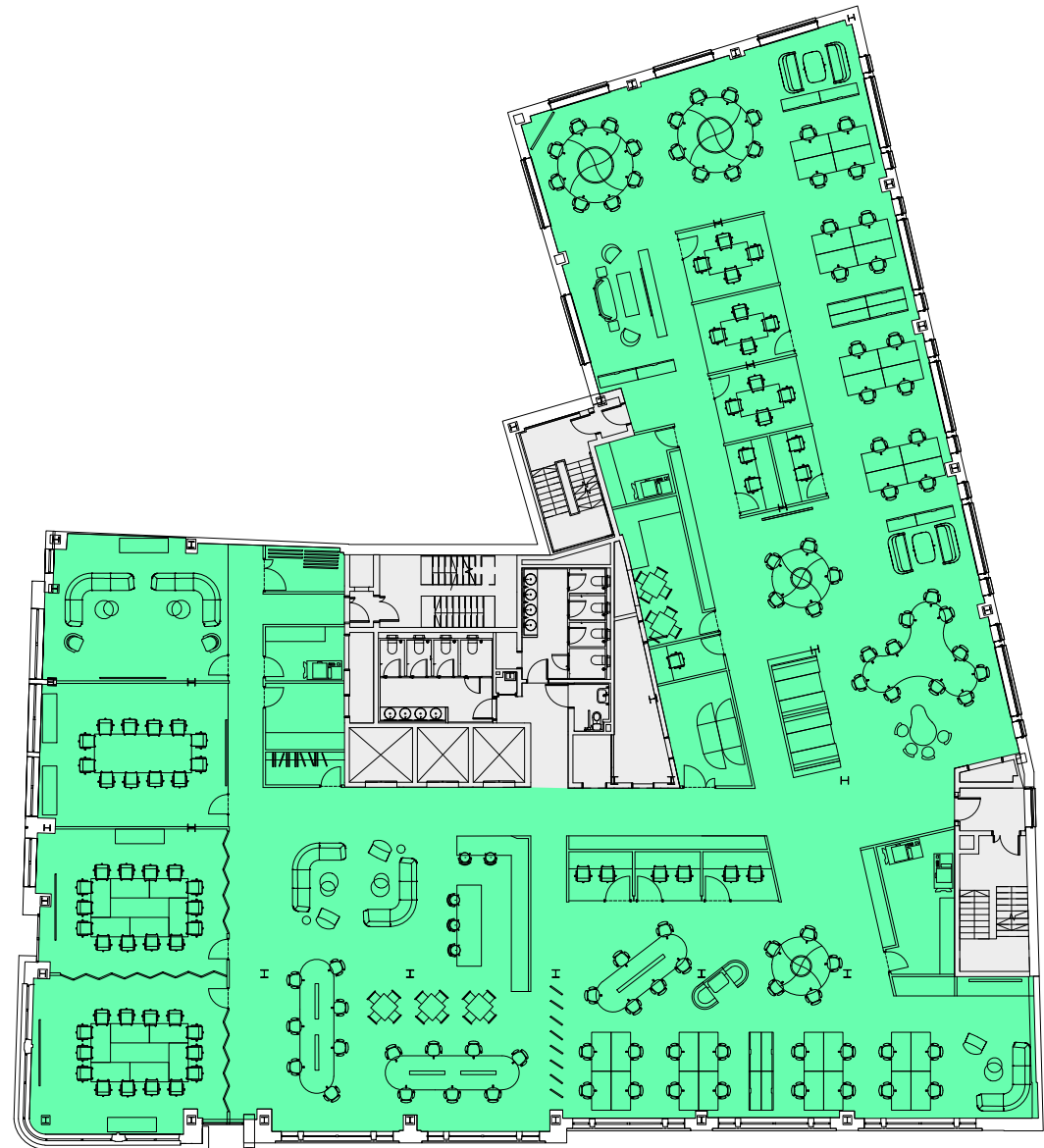


Office

Core

Not to scale.
For indicative purposes only.

Warwick Lane



Newgate Street